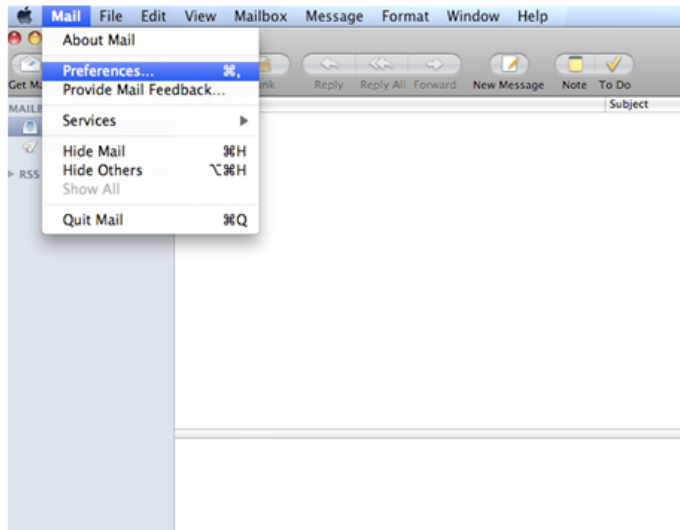


How to enable SSL in Mac Mail

Enabling SSL for POP3 connections

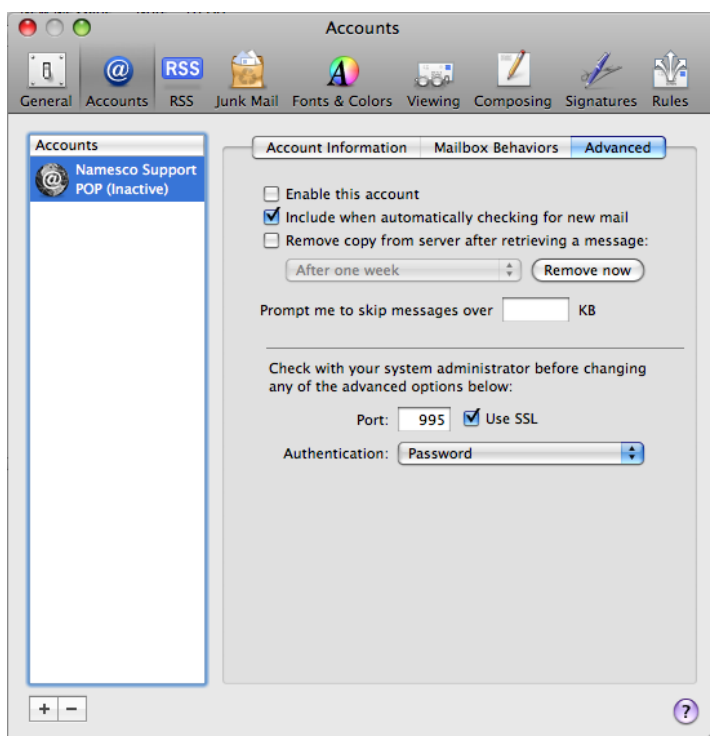
Please note you will need to update the incoming mail server in your mail client to 'pop3.reg365.net'.

- Select the **Mail** menu and click **Preferences**



- Click on the **Accounts** section and then click on the **Advanced** tab.

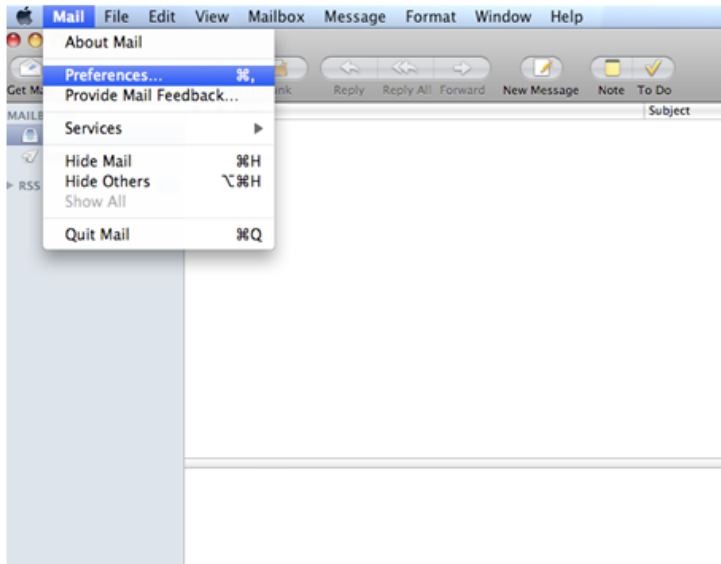
- Tick the box **Use SSL** and set authentication to **Password**



Enabling SSL for IMAP connections

Please note you will need to update the incoming mail server in your mail client to 'imap.reg365.net'.

- Select the **Mail** menu and click **Preferences**



- Click on the **Accounts** section and then click on the **Advanced** tab.

- Tick the box **Use SSL** and set authentication to **Password**

