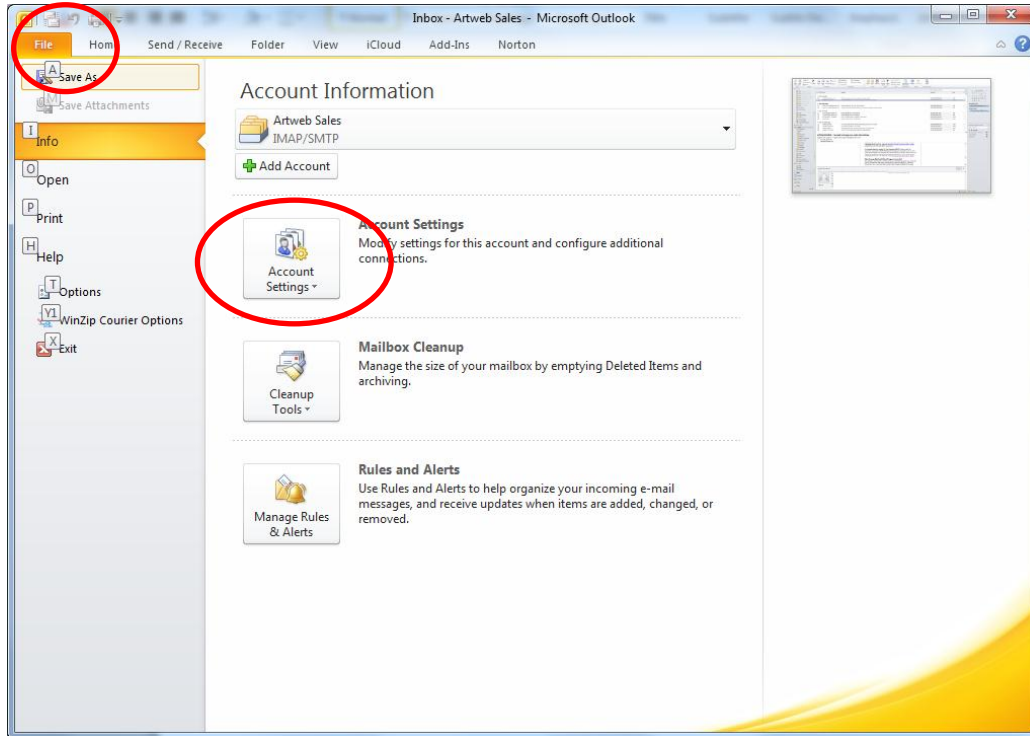


How to enable SSL for SMTP in Outlook 2010

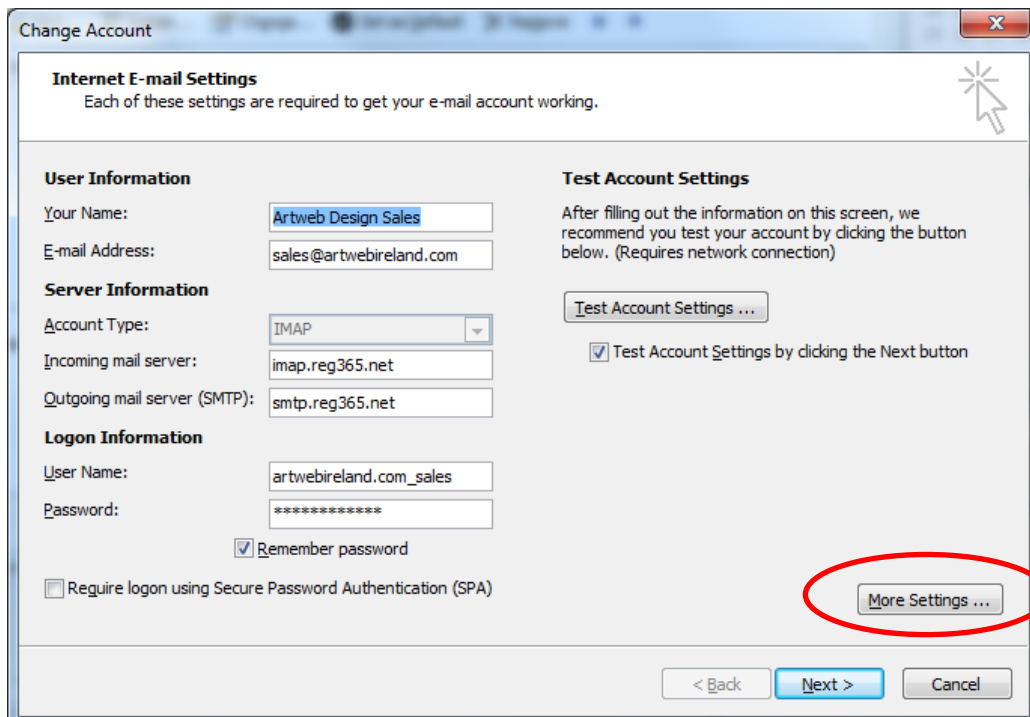
Important this is for outgoing emails only

Open Microsoft Outlook 2010 and click on the **File** tab and then **Account Settings**



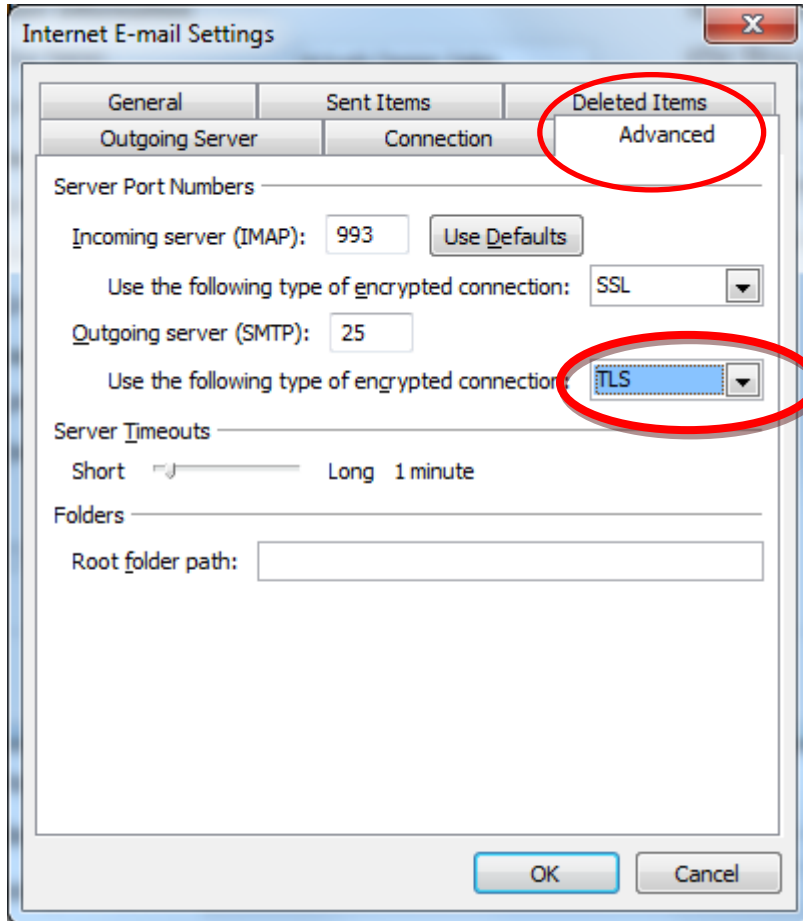
Click on the account you wish to modify and then click on the **Change** button

Click on **More Settings**



Select the **Advanced** tab. Set the **Outgoing server (SMTP)** port to 25.

Specify **TLS** at the **Use the following type of encrypted connection** setting.



Click **OK**, followed by **Next** and then **Finish**.